

# The Quiet Art & Logic-Work Of...

## Architectural Color Design

### Workplace Learning Development & Performance Support



Environmental Artistry  
Interior & Exterior

By  
Christian Winters  
[www.skillscrafters.com](http://www.skillscrafters.com)

Inquiries Welcome  
From and For Anywhere USA



Instructional Design (ISD-ID),  
Training Develop (T&D) & Job Aids

My professional philosophy is the crafting of above-average works for at or near average rate, remain flexible to enjoy project travel opportunities, and engage others mindful to share process and joys of near-term achievements.

This created a rich service-based education. Near all images to follow are of actual projects in two professions: Architectural color design (1) & Architecture of/for job skills Training Development and Performance Support (2).

It is hoped this presentation provides a measure of confidence if considering a contact by email, phone or text.

Thank you for your interest and time to review.

# Table of Contents

Select a topic at the right, click next, or scroll the window if PDF format to advance. Click TOC (below) to return here.

Thank you for your interest.

## Introduction

1



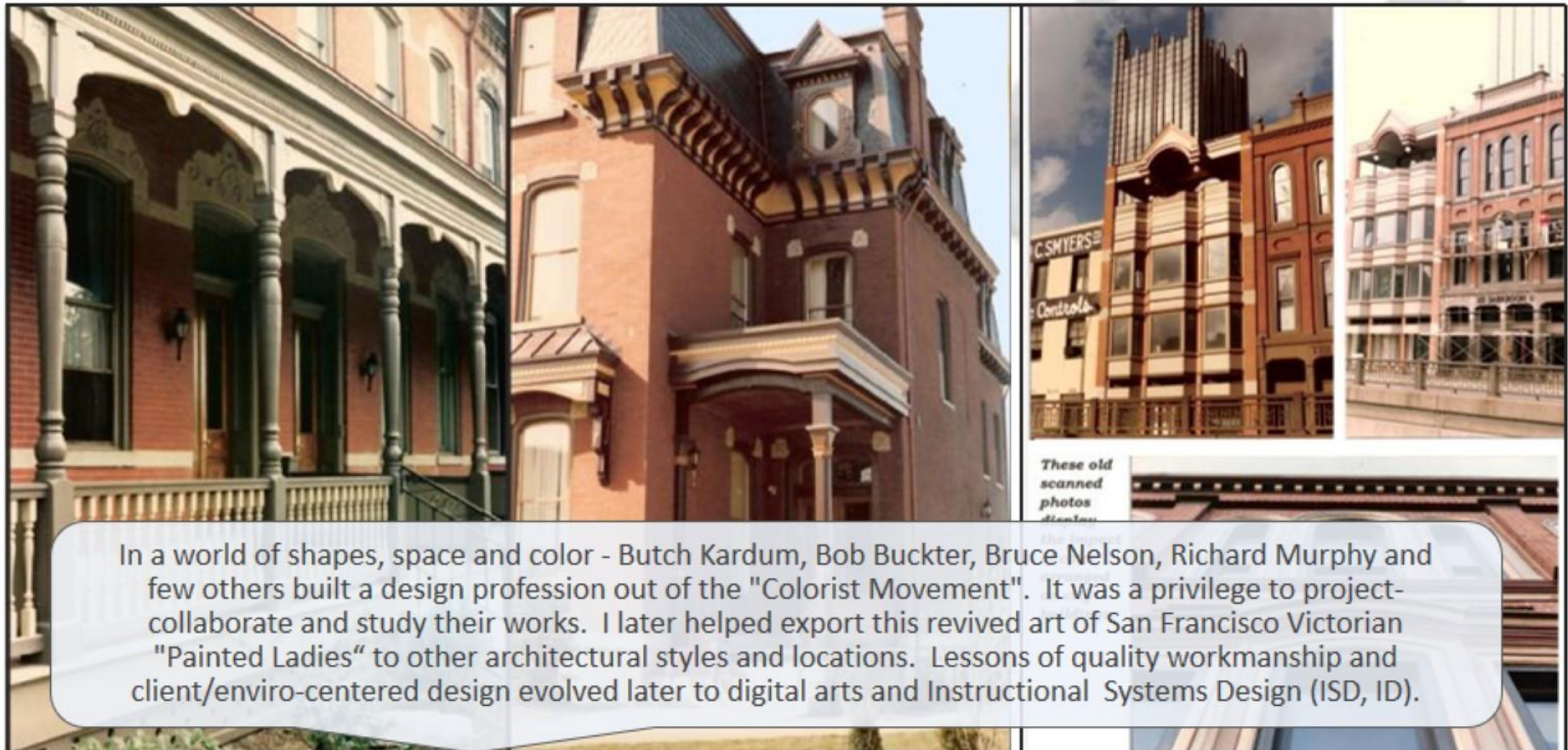
- ▷ Architectural Color Design (6)
- ▷ Informational Creativity (2)
- ▷ Instructional Design (8)
- ▷ Curricula & Content Maps (1)
- ▷ Onsite & Remote Collaborations (2)
- ▷ Closing (1)



# Architectural Color Designs as “Gifts To The Streets”

## Functional Art & Craft Enhances Homes & Businesses

Pragmatic art form helps revitalize neighborhoods, reveal building character and enhance the environment. Crafted color groups offer real visual/value impacts.





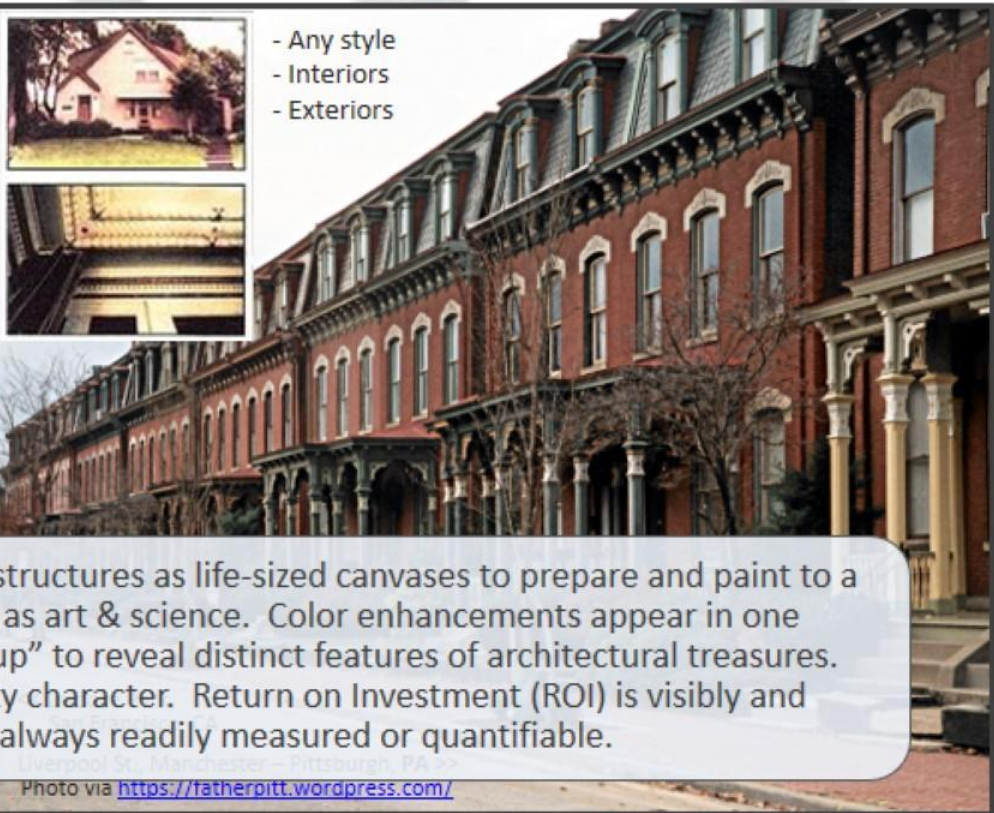
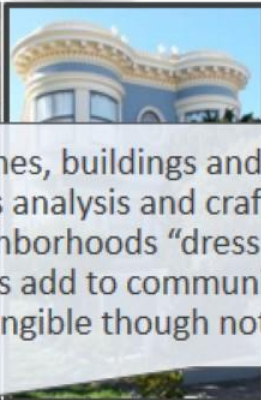
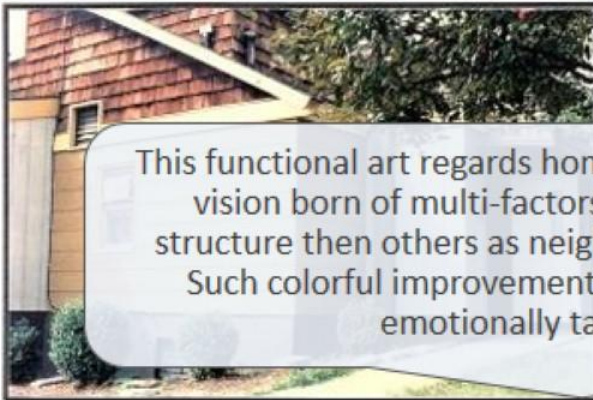
# Color Designs Highlight Architecture

## Studied Approach Reveals Unique Features

Adobe to Victorian styles, new construction to restored, renovated or maintained. Services for historic preservationists respectful of location, character and heritage. Color coordinated structures, buildings, businesses, workplaces and homes.



- Any style
- Interiors
- Exteriors



This functional art regards homes, buildings and structures as life-sized canvases to prepare and paint to a vision born of multi-factors analysis and craft as art & science. Color enhancements appear in one structure then others as neighborhoods "dress up" to reveal distinct features of architectural treasures. Such colorful improvements add to community character. Return on Investment (ROI) is visibly and emotionally tangible though not always readily measured or quantifiable.

Liverpool St. Manchester - Pittsburgh, PA  
Photo via <https://fatherpitt.wordpress.com/>



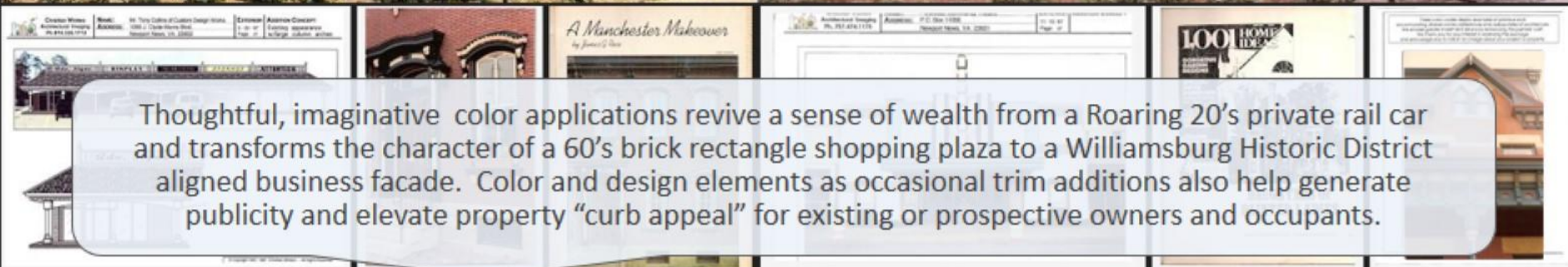
# Color Analysis, Design, Application & Maintenance

## Crafted 1<sup>st</sup> Impressions To Enhance Actual Value

Historic “DL&W Belford 99” rail car shown. Variety of structures and styles done. Improve “curb appeal” and increase commercial site publicity and public interest.

Before

After

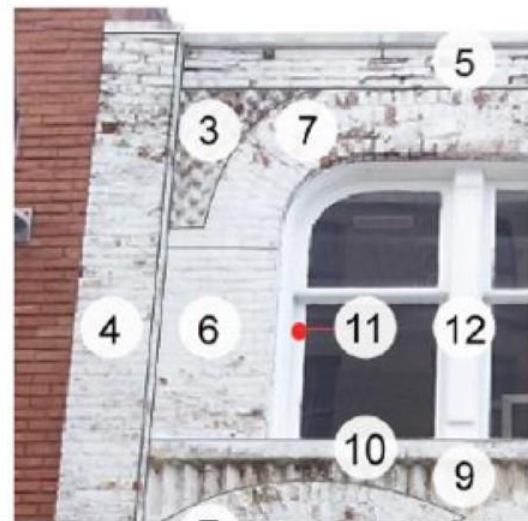
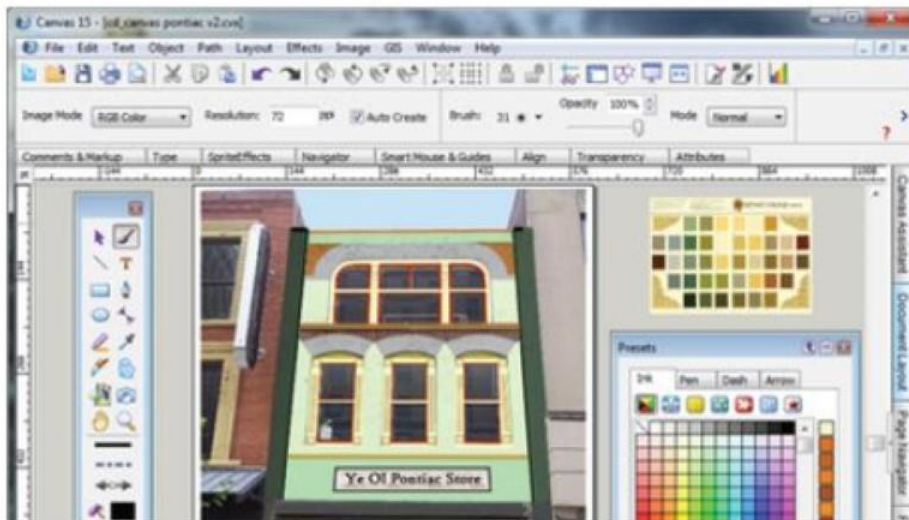




# Personalized Applications of Quality and Creativity

## Appearance Lasting Years Display Logic-Work Merit

Site analysis of multiple factors. Option to digital preview before actual painting. Serviced many property owners in addition to architects, builders, property managers and painters. Consulting with clear instructions for applications.



Architectural color designing pioneered use of digital photo imaging for previewing design concepts and presenting to historic district and residential community panels. “Paint by number” reference is just one way of conveying color placements. For onsite or online consulting, a color preview and placement guide method for painters and/or DIY owners matches project needs and requirements.



# Owner & Occupant Oriented Color Arrangements Suited to Environment, Exposure and Preferences

Online remote and onsite project work. Urban, suburban, rural and coastal.  
Functional art designed to last for years as evident Return On Investment (ROI).



Coating consulting and color designs address exposure conditions, application costs and coating performance.

Color use enhances the environment and your property while adding value. The investment returns benefits for years.

## COLOR

Artistry & Design to elevate your painting project to a personalized architectural art.

**BEFORE** **AFTER**

NEW TO HISTORIC  
ANY STYLE!!!

- 20+ years in Color Design
- Faux Painting
- Exterior & Interior
- Personalized Color
- Adobe to Victorian
- Computer Imaging

Phone 810.643.1334  
Call for FREE Estimate  
Or email Chris at: csw@skillscrafters.com

## Multicolor Design & Painting

Color, Artistry & Design for Owners, Architects, Builders and Painters to Elevate Residential & Commercial Painting to an Art Form

Call Chris Winters, 810.643.1334  
Or contact contractor below:



Exterior Color Designs



Interior Color Designs



Graphics & Illustration





**Fine Craftsmanship.**  
Historic or Contemporary Color Artistry with Chris Winters & Friends.

Photo Imaging



Pre-Painting Computer Imaging



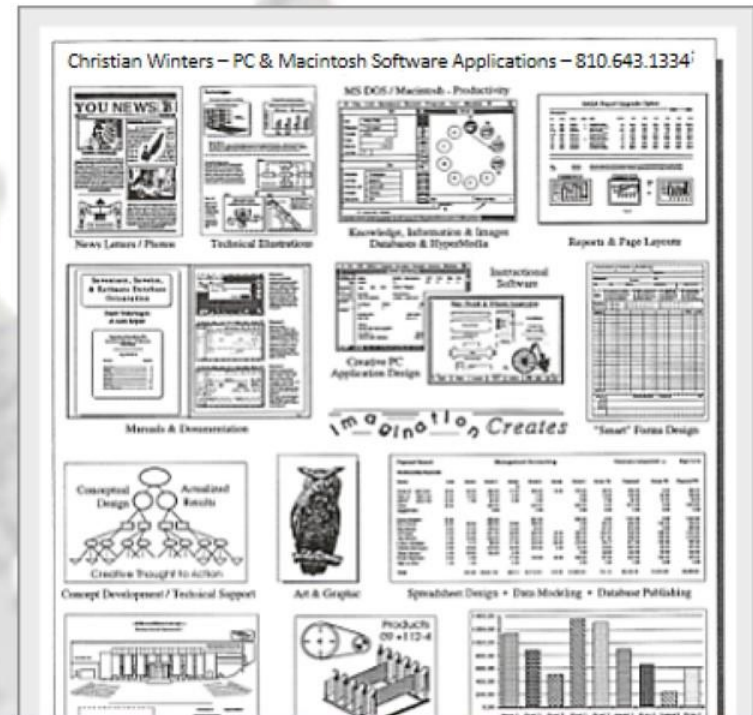
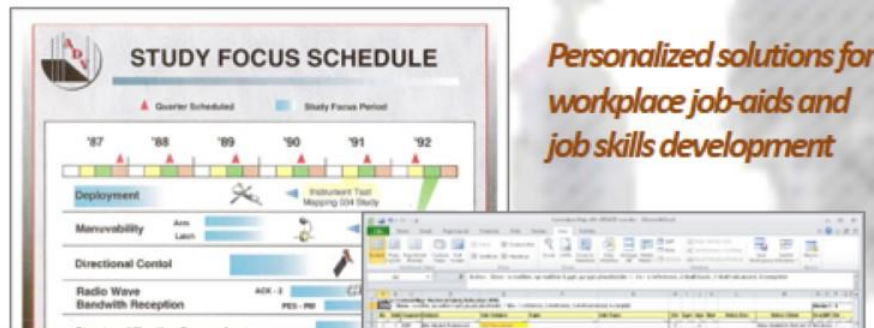
By photos, form, phone or online communications - color designs reflect client-collaboration and/or studied professional interpretation. A contact 1st step may lead as shown to years of enjoying life-sized artistry benefiting property owners, occupants and neighborhood. Onsite or online guided consulting uniquely adapts a crafted color pallet to an interior and/or exterior of most any style, shape and taste.



# Quality Tech-Craft & Logic-Work = ROI

## Creative Innovation for Productive Professionals

- Business relevant competitive-edge digital arts & science skills support.
- Craft diverse info-tech applications as databases, spreadsheets, graphics, video editing, presentations, etc.
- Service to small to enterprise clients, employers and their customers.



As architectural color creativity advances the look and feel of homes, buildings and structures - software and tech creativity advances business competitiveness. Key is a client-relevant focus for ROI prospects. As with architecture - professional and organizational information have multiple factors to analyze. Common results holistically advanced information and instruction workflow at points source-to-finish. Quality, cost-effective Instructional Design (ISD P-ADDIE) and Performance Support is my 2nd professional art.



# Assist or Enable Design, Develop & Management Workplace Training, e-Learning, Performance Support

- Document workflow processes
- Identify current / future work skills and knowledge gaps
- Prepare training / performance support business cases
- Collaborate in content design and development
- Plan, acquire or produce text, photos, video, illustrations
- Build e-learning and job-aid mockups and rapid-prototypes
- Design and program instruction for print and interactive media



I provide a convenient resource to fill various Training Development (T&D) and ISD P-ADDIE tasks in collaborative support of a T&D project or initiative. Examples: Authoring platform and course build process, Research & Development (R&D), Curriculum/Course/Content analysis, development and programed publishing of same. Audio & Visual (AV) media planning/capture/editing, Illustration (primarily 2D), Interactive programming, SME interviews and knowledge capture for class or e-learning of job procedures.



# Effective Remote and Onsite Collaborations

## Return on Investment (ROI) and Results Focused

- Use Existing In-House or Recommend Applications, Tools and Resources
  - Align support service to most any Learning Management System (LMS) and/or Learning Content Management Systems (LCMS)
  - Use authoring tools, office suites , graphics, communications apps.

Content in Articulate, Lectora, Adobe Captivate, Camtasia or other tools as LCMS / LMS platforms and test engines (Instancy, eXact, SumTotal, Amplifier, etc.). Work with any application to author and publish content in support of a Learning / Training Development or Performance Support initiative.



# Human Resources (HR) & Learning Development (LD)

## Training Development Support for Classroom & e-Learning

**Agile** Instructional Design (ISD-ID), writing, data-model, media, programming.  
**Planning-Analysis, Design, Development, Implementation, Evaluation (P-ADDIE)**

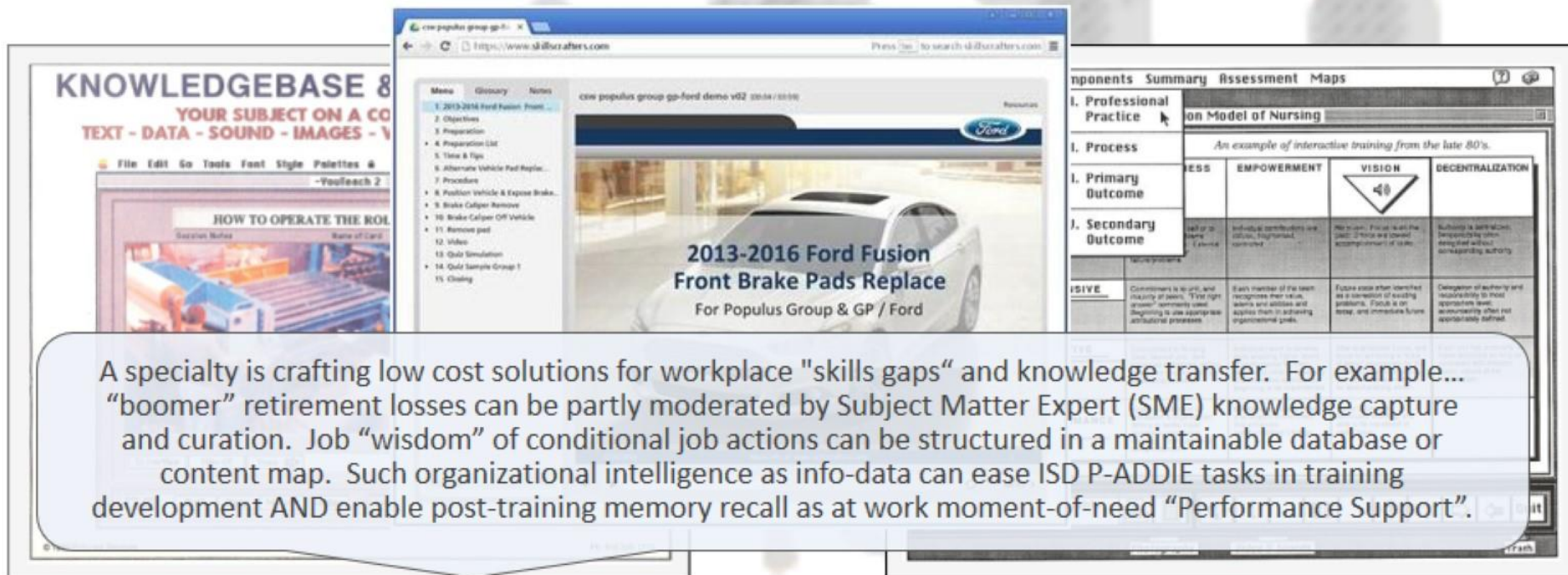
Content outlines and design documents supporting e-learning content authoring and publishing are provided OR adapt to organizational practice. Curriculum and course content maps as database consolidates key information relevant for varied roles supporting instructional design and P-ADDIE tasks. Adapt use to meet business and instruction needs, goals and interests.



# Training & Development / Instructional Design

## Organization Aligned Performance Support Solutions

- Collaborative, efficient, personalized service
- Facilitate or enable organizational intelligence use
- Matched to site-relevant concerns, interests, needs
- Focus on worker training and rapid knowledge transfer.



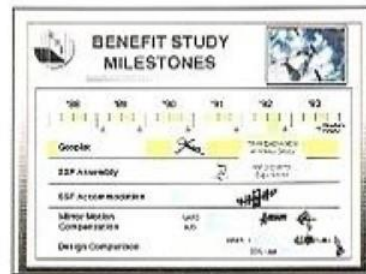
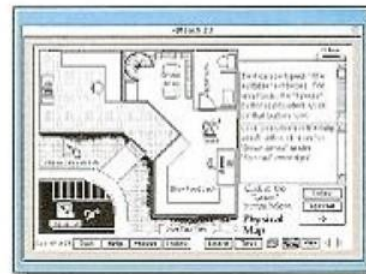
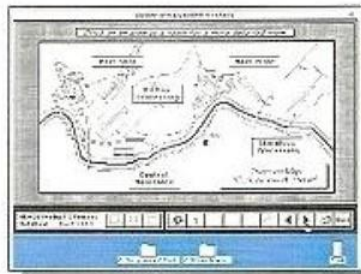
The image displays three overlapping screenshots of digital training materials. The leftmost screenshot shows a 'KNOWLEDGBASE 8' interface with a menu on the left listing topics like '2013-2016 Ford Fusion Front...', 'Objectives', 'Preparation', 'Procedure', 'Notes & Tips', 'Position Vehicle & Expose Brake...', 'Brake Caliper Remove', 'Brake Caliper Off Vehicle', 'Remove pad', 'Video', 'Quiz Simulation', 'Quiz Sample Group 1', and 'Closing'. The middle screenshot is a web browser showing a '2013-2016 Ford Fusion Front Brake Pads Replace' tutorial for Populus Group & GP / Ford, featuring a car image and a list of resources. The rightmost screenshot shows a 'Model of Nursing' diagram with a table of components.

Components	Summary	Assessment	Maps
I. Professional Practice	on Model of Nursing		
I. Process	An example of interactive training from the late 80's.		
I. Primary Outcome	LESS	EMPOWERMENT	VISION
I. Secondary Outcome	Self or to others	Individual contributions and efforts, fragmented, uncoordinated	Religious, Political, Social, Economic, Environmental, etc.
ISIVE	Common to all, and majority of peers. "The right answer" immediately used. Beginning to use appropriate attribution protocols.	Each member of the team recognizes their own, others and applies them in achieving organizational goals.	Future state often described as a collection of existing problems. Focus is on today, and immediate future.

A specialty is crafting low cost solutions for workplace "skills gaps" and knowledge transfer. For example... "boomer" retirement losses can be partly moderated by Subject Matter Expert (SME) knowledge capture and curation. Job "wisdom" of conditional job actions can be structured in a maintainable database or content map. Such organizational intelligence as info-data can ease ISD P-ADDIE tasks in training development AND enable post-training memory recall as at work moment-of-need "Performance Support".

# Show & Tell YOUR Workplace Activities

## Build, Share and Maintain Organizational Memory



- Present and test on most any subject
- Display workplace: concepts, facts, processes, places, people and roles
- Show how to use machines, software, tools, equipment, service tasks, etc.



Arrangements by/for varied organizations providing database design & development, digital arts & media, training development and instructional design. Examples as of steel mill facilities and light manufacturing job aids, health care media database, aerospace project planning presentation, K-4 education e-learning of mining resources and "Cube College" (via NASA JSC) content access and interaction concept.



# Content Analysis, e-Learning & Job Aids Production

## Workplace Skills Training & Performance Support (PS)

- GM Service Technical College
  - TECHAssist & WEBAssist Job Aids
  - ILT to WBT & new courses
- UAW GM Health & Safety
  - Millwright blended safety training
- GM University
  - Curriculum analytics
  - ILT to WBT course conversions
- US Navy
  - Interactive Media Phalanx
  - Weapon System Maintenance Manual - Functional Prototype

Repair procedure for the PSD on GMT201 Crossover Vans

Introduction

Models Affected

Customers may comment that their left hand power side door is inoperative. Vehicles affected by this condition include:

1. 2005 and newer Chevrolet Uplander
2. 2005 and newer Saturn Relay
3. 2005 and newer Buick Terraza
4. 2005 and newer Pontiac Montana SV6 when the 8th digit of the VIN code is a letter "L".

**IMPORTANT:**  
When you have a 2005 model year Montana or Montana SV6 (4), look at the 8th digit of the VIN. If the 8th digit is an "L", indicating the vehicle is equipped with a GMT201 PSD, continue with this TECHAssist. If the 8th digit is an "E", indicating the vehicle is equipped with a 2001-2005 GMT200 PSD, exit this GMT201 PSD TECHAssist and take the GMT200 PSD TECHAssist.

HELP | BROWSER | PRINT | REPERFORMED | 50% of this topic.

CDT ID	Document Module / Pg #	Document	Subject	Sub-Subject	CDT Page/Total	QA
44 H088	1 2 3 63	Chapter 2	Pre-Test	Isolating electrical equipment, both physical and	6	
44 H088	1 2 3 63	Chapter 2	Pre-Test	Isolation route include	6	
44 H088	1 2 4 63	Chapter 2	Pre-Test	Is required where engineers are to be	6	
44 H088	1 2 3 63	Chapter 2	Pre-Test	The present on, piece of machinery will	6	
44 H088	1 2 3 63	Chapter 2	Pre-Test	The present on, piece of machinery will	6	
44 H088	1 2 3 63	Chapter 2	Pre-Test	The present on, piece of machinery will	6	
44 H088	1 2 3 63	Chapter 2	Pre-Test	The present on, piece of machinery will	6	
44 H088	1 2 3 63	Chapter 2	Pre-Test	The present on, piece of machinery will	6	
44 H088	1 2 3 63	Chapter 2	Pre-Test	The present on, piece of machinery will	6	
44 H088	1 2 3 63	Chapter 2	Pre-Test	The present on, piece of machinery will	6	

Key ROI Variables (in-part)

Course Duration

Project examples as T&D / ISD art & craft services used by clients of one employer. These are flex-role collaborations for/with team members as Subject Matter Experts (SMEs), Instructional Designers (ISD-ID), Info-Tech specialists, etc. contributing to productive outcomes. Appreciation to all. Call out to Mitchell & Elaine (PA), Marv Jackson, F&K Koprivier (VA), Chip Rapelje & Ted Villella (MI) for collaborative memories.



# Training Development / ISD-ID ADDIE Content Maps

## Content Map for Multi-Disciplinary Job Skills Training

- L&D/ISD Performance Support
  - Agile ADDIE info-database tool
  - Process discipline with quality output
  - Post-training worker knowledge-base
- Effective Collaborations
  - Info-data map P-ADDIE elements
  - Competencies, Objectives, Q&As, Etc.



Map_58JT	ID_Dom	Head_Dom	Head_Subj-Sub1	Head_Topic	Head_Topic-Sub1	Body_Text	el_sel	cv_stud	cv_vali	QA_70	QA_sae	QA_C2p	Type	Condition	Q&As	Obj_ID	Obj_Ad	
1	1	CV Ecosys	Splash	Entrq	>>>	Start Subject- Domain 1: Connected Vehicle	el Sel								NEED=Done	UPDATE QA 701		
2	1	CV Ecosys	Introduction	cq= Group Exercise Alert	Introduction > Sponsors > Housekeeping > Games & Exercises > Course expectations > Rules													
3	1	CV Ecosys	Introduction	Who Am I?	gra= word cloud - John's history													
4	1	CV Ecosys	Introduction	I'm a Developer.	gra= served entities													
5	1	CV Ecosys	Introduction	Who are the Sponsors?	CVP - Collaboration between MC - SAE - CVTA													
6	1	CV Ecosys	Introduction	Who is Mobile Comply?	Connectivity - Infrastructure - Security - CV MC is an international leader...Training - (text) / SME - (text) / Publications - (text)													
7	1	CV Ecosys	Introduction	Who is SAE and CVTA?	(Bubble & Block text)													
8	1	Vehicle			TOC Add c3b = error >>>													
9	1	Technology			What is CV? Network node	• A Connected Car or Connected Vehicle (CV) is eq	0			1		1	mc1		Basic concept and ap	1.2		
10	1	Ecosystem			What is CV? Network node	• Allows vehicle to access wireless and networked devices both inside and outside the vehicle							prev_ut_restore =		• A Connected Car or Connected			
11	1	Ecosystem			What is CV? Network node	• CV research a multimodal initiative aims to enable	X	s01		2		2	mc1		CV research is aimed	1.2		
12	1	Course				TOC Add c3b = Purpose = LAST TOC (HIDE REMAINING)												
13	2	Co-develop	Safety Funct	Root of Course	Why we are here	The root of why we're all in this courseThe United St	0			12			mc1					
14																		
15																		
16																		
17																		
18																		
19																		
20																		
21																		

Capture and structure training information with agile oriented tools and methods to rapidly consolidate, collaborate, ease and expedite Instructional Design and Performance Support production aligned to industry standard practices of: Planning, Analysis, Design, Development, Implementation and Evaluation (P-ADDIE).

Capture and structure training information with agile oriented tools and methods to rapidly consolidate, collaborate, ease and expedite Instructional Design and Performance Support production aligned to industry standard practices of: Planning, Analysis, Design, Development, Implementation and Evaluation (P-ADDIE).



# Assist or Enable Design, Develop, Deliver & Manage Workplace Training, e-Learning & Performance Support

- Content
  - Organized ISD P-ADDIE I/O Content Maps
  - ISD aligned to use of most any LCMS/LMS
  - WBT & Performance Support solutions with xAPI
- Collaborations
  - Adapt agile ISD to established process or enable new
  - *Design & develop documents integrated to workflow*
  - *Trackable input & output from starting source to final deliverables*



Use of various Learning Content Management Systems (LCMS) and Learning Management Systems (LMSs) to author, publish and deliver e-Learning and Performance Support (PS). Use of standards as SCORM, xAPI and/or DITA LT for XML-based distribution and reducing touch points for single-source editing.

# Instructional Communication on Diverse Subjects

## Informational Presentations, Training and Job Aids

- **Sectors:** Aerospace, Defense, Manufacturing, Medical & Others
- **Depicted:** Stories of What, Where, When, Who, How & Why.



The collage consists of five panels. Top left: A yellow mining machine in a dark tunnel, labeled 'Bureau of Mines / NIOSH – CBT'. Top middle: A satellite in space above Earth, labeled 'NASA – Multi-Media'. Top right: Molten steel being poured in a factory, labeled 'Armco Steel – Hyper-Media'. Bottom left: A large ship at sea, labeled 'Flight Control Systems Stennis / Truman - IETMs'. Bottom right: A technical diagram of a vehicle system, labeled 'Vehicle Systems GM / SAE WBT'. The diagram shows an ITS vehicle station connected to an ITS roadside station urban, which is connected to an ITS control station (Urban Traffic Center - UTC). It also shows a traffic light and a traffic light camera.

Diverse industry sectors, subjects and topics presented in varied media. CBT = "Coal Country" via Mitchell & Elaine of SMARTSolution Tech. and Pittsburgh Research Laboratory, NASA Controls Structures Interaction (CSI) media projects via Frank Koprivier III, IETMs (Interactive Electronic Technical Manuals) for Newport News Shipbuilding via CDI Marine and GM / SAE WBT as ILT conversion and new classroom training content via Raytheon / Mobile Comply.



## Performance Support for Training Developers

- Collaborative: define, design, develop, deliver knowledge content
- Remote and onsite service - Professional and responsive assistance.

Services in Instructional Design (ISD-ID) Development (L&D / T&D) aided by our management requirement

*Info-data Content Maps for:*

Training Development  
Instructional Design  
e-Learning & job aids

- Site specific content
- Skills Training
- Skills Assessment
- Multi-Standards-based
- Interactive learning
- Animations & Simulations
- Internal / External Uses
- Mobile LCMS / LMS

Services in Instructional Design (ISD-ID) and Learning / Training Development (L&D / T&D) aided by info-data content maps and models tailored to corporate curriculum database and project management requirements.

# Diverse Training & Knowledge-Work History Built by Dedicated ROI-Minded Customer Service

Team player = Beneficiaries of combined efforts.



Opportunities extended by clients and employers provided a rich service-based education. Project collaboration and design activities led to team accomplishments. Analysis and production of training and technical content benefited professionals, organizations and their customers.



# Diverse Training & Knowledge-Work History

## Built by Dedicated ROI-Minded Customer Service

### Projects > Challenges > Results = Productive fun.

#### **Cormack McCarthy, Product & System Manager**

National Technology Transfer Inc. (NTT): 2011-12 & 2014: Electrical Safety course conversion, design, development of ILT to WBT.

- \*Develops excellent rapport with both the Team and the Customer.
- \*What makes Christian outstanding is his high degree of creativity in conjunction with his equally high level of organization skills.
- \*When I handed down projects to Chris I could relax and let go. Chris was focused, hardworking and worked relentlessly to exceed expectations and get the job done.
- \*Great attitude.

#### **Patricia (Pat) Kelley, Division Manager**

National Occupational Competency Testing Institute (NOCTI): 2007-11: Career curriculum testing blueprints / teacher / student guides update of document design and graphics, test-bank graphics check and quality upgrades, interactive quiz pilot project programming via collaborative design and development model.

- \*Able to take content, create an engine and through his excellent understanding of the technology needed to build online e-learning courses led our team on multiple projects.
- \*Christian is a multi-tasker.
- \*What stands out about Christian is his organization skills. He created this system in Excel to keep not only himself but everyone around him on track.

#### **Ted Villella, Program Manager**

Raytheon Professional Services: 2009-2012: Multiple WBT courses

- \*Hardworking and extremely creative.
- \*Extremely reliable. Excellent project tracking.
- \*Only complaint would be I sometimes had to tell him to go home. This guy is driven and won't quit until he has hit the mark.

Nothing of project images or references shown in this presentation would exist without contact and collaborations that preceded it. Accomplishments were most often enjoyed with others who shared the journey and appreciated the effort in our "walk the talk" journeys.

Thank you to clients and collaborators making outcomes and memories possible.

# Diverse Training & Knowledge-Work History Built by Dedicated ROI-Minded Customer Service

## Thank you your time with this art & knowledge



solution

Architectural Color Design  
& Environmental Art



Architecture or Support of  
Instructional Design & Media

- Video
- Writing
- Illustration
- Photography
- Presentation
- Programming
- Audio & Sound
- Ideas & Concepts
- Interactive Multimedia
- Digital Arts & Sciences
- Animations & Simulations
- Outlines, Scripts, Storyboards
- Content maps / Content Development
- P-ADDIE Applications Program Support

Start by conveying a current situation. We'll discuss a practical path to articulate and achieve a vision of results.

Visit [www.skillscrafters](http://www.skillscrafters) or contact me via following info...